



Gulfside Healthcare Services

Hospice | Palliative Care | Home Health



Sponsors at The Candace Glewen Charity Fashion Show



Lorraine Hadley Recognized as Tampa Bay Lightning Community Hero



Thrift Shoppe Volunteer Connie



Nursing Staff Receive Easter Baskets from Local Community Church



Wife of Patient Recognizes Chaplain Mike Zulinke as a Hospice Hero



Lutz Thrift Shoppe Volunteer Carol



Veteran Patient Receives Pin from Veteran Chaplain Patrick McCurdy



Bikers Riding at Hittin' the Road for Hospice



The Women for Gulfside Founding Members



Students Perform at Charity Festival of Arts



Local Bands Playing at Paulie Palooza

Making Compassionate Care Possible... Together

Pasco County - Through Your Eyes

2022 Calendar



A Message from the President & CEO

Greetings!

What a pleasure it is to welcome you to our annual community calendar of award-winning Pasco County photos by residents right here in our backyard! Congratulations to all winners, and thank you for your artistry and beautiful backdrop to each month of this calendar.

Reflecting on last years' message of the Gulfside Healthcare Services Brand Promise of *"Bravely pioneering patient-centered solutions by our honored staff, to serve and support our community,"* it is only fitting that I present to you the theme of this year. Our highlighted VALUE this year is **COMMUNITY-SUPPORTING SERVICE**. What this means is that just as we seek support from our community leaders, business associates, donors and volunteers, it is also the duty and honor of Gulfside to support our community and give back. We are proud to serve, and we commend our fellow service providers, businesses and community agencies right here in Pasco County.

This next year of 2022 is aimed at continuing our excellent care and service through our three premier business lines - Gulfside Hospice, Gulfside Palliative Care and Gulfside Home Health. Our continuum of care approach to patients and caregivers makes it easy for any patient or caregiver. Once joining our Gulfside family of services, our expert, compassionate team provides care within any stage of illness or need.

Please enjoy this calendar and resource guide, and always know we are here to serve whenever needed.

Sincerely,

Linda L. Ward

IN THEIR WORDS:



I would like to thank all of the wonderful people at Gulfside Hospice who helped me keep my husband at home for six months. Gulfside provided caring and compassionate care for him and my family. I can't thank everyone enough.

- Frances, wife of a Gulfside patient

"Thanks to all of the caregivers who looked after my mom. They were all very responsive and showed the highest level of compassion and care that could be possible.

I feel that Gulfside Hospice provides the best care and I'm so happy they were there to care for my mom during a pandemic."

- Daughter of a Gulfside patient



My sister and I want to thank all those involved in the care of our mom. Thanks to all the help we received, we were able to keep mom at home with us and to help her pass away peacefully and with dignity as she wanted.

- Karen & Cheryl, daughters of a Gulfside patient



Community-Supporting Service: A Gulfside Value

At Gulfside, one of our three top values is Community-Supporting Service. We strive to always support the needs of the community, form alliances and partnerships with like-minded organizations, and never turn our back on those in need.

Gulfside helps patients facing serious illness and their families cope with one of the most difficult times in their lives. No patient is turned away because of an inability to pay, and free bereavement services are offered to our entire community. This compassionate care is made possible through the support of donors, volunteers and community partners.

Join a growing community of generous donors today by helping Gulfside with your gifts of time, talent and treasure. No gift is too small and every gift makes a difference. Donate online or sign up to volunteer by visiting www.gulfside.org

Making Compassionate Care Possible... Together



SHOP

Shop affordable, unique items while supporting a great cause at the Gulfside Hospice Thrift Shoppes.



DONATE

Make a direct impact with a personal gift to support patient care and bereavement services.



PARTNER

Showcase your company and join other local business heroes in the Community Partners program.



VOLUNTEER

Share your time and talent to support patient care, Thrift Shoppe, and fundraising event teams.





"Red Shouldered Hawk in the Rain" by Aimee Maher, Hudson

**2021
OCT**

S	M	T	W	T	F	S
					1	2
3	4	5	6	7	8	9
10	11	12	13	14	15	16
17	18	19	20	21	22	23
24/31	25	26	27	28	29	30

**2021
NOV**

S	M	T	W	T	F	S
	1	2	3	4	5	6
7	8	9	10	11	12	13
14	15	16	17	18	19	20
21	22	23	24	25	26	27
28	29	30				

**2021
DEC**

S	M	T	W	T	F	S
			1	2	3	4
5	6	7	8	9	10	11
12	13	14	15	16	17	18
19	20	21	22	23	24	25
26	27	28	29	30	31	



October 2021 - December 2021



"Female Cardinal Enjoying A Snack" by Nicole Magazu, Land O' Lakes

January 2022

Sunday	Monday	Tuesday	Wednesday	Thursday	Friday	Saturday
						New Year's Day <i>1</i>
<i>2</i>	<i>3</i>	<i>4</i>	<i>5</i>	<i>6</i>	<i>7</i>	<i>8</i>
<i>9</i>	<i>10</i>	<i>11</i>	<i>12</i>	<i>13</i>	<i>14</i>	<i>15</i>
<i>16</i>	Martin Luther King Jr. Day <i>17</i>	<i>18</i>	<i>19</i>	<i>20</i>	<i>21</i>	<i>22</i>
<i>23</i>	<i>24</i>					
<i>30</i>	<i>31</i>	<i>25</i>	<i>26</i>	<i>27</i>	<i>28</i>	<i>29</i>

DEC 21

S	M	T	W	T	F	S
			1	2	3	4
5	6	7	8	9	10	11
12	13	14	15	16	17	18
19	20	21	22	23	24	25
26	27	28	29	30	31	



Gulfside Healthcare Services

Hospice | Palliative Care | Home Health



FEB 22

S	M	T	W	T	F	S
		1	2	3	4	5
6	7	8	9	10	11	12
13	14	15	16	17	18	19
20	21	22	23	24	25	26
27	28					



"Winter Longhorns" by Isaac Jeter, Dade City

February 2022

Sunday	Monday	Tuesday	Wednesday	Thursday	Friday	Saturday
		1	Groundhog Day 2	3	4	5
6	7	8	9	10	11	12
13	Valentine's Day 14	15	16	17	18	 19
20	Presidents' Day 21	22	23	24	25	26
27	28					

JAN

S	M	T	W	T	F	S
						1
2	3	4	5	6	7	8
9	10	11	12	13	14	15
16	17	18	19	20	21	22
23/30	24/31	25	26	27	28	29



Gulfside Healthcare Services

Hospice | Palliative Care | Home Health

MAR

S	M	T	W	T	F	S
		1	2	3	4	5
6	7	8	9	10	11	12
13	14	15	16	17	18	19
20	21	22	23	24	25	26
27	28	29	30	31		



"Sunset" by Vincent Hopper, New Port Richey

March 2022

Sunday	Monday	Tuesday	Wednesday	Thursday	Friday	Saturday
		1	Ash Wednesday 2	3	4	5
6	7	8	9	10	11	12
Daylight Saving Time Begins 13	14	15	16	St. Patrick's Day 17	18	19
20	21	22	23	24	25	26
27	28	29	Doctor's Day 30	31		

FEB

S	M	T	W	T	F	S
		1	2	3	4	5
6	7	8	9	10	11	12
13	14	15	16	17	18	19
20	21	22	23	24	25	26
27	28					



Gulfside Healthcare Services

Hospice | Palliative Care | Home Health

APR

S	M	T	W	T	F	S
					1	2
3	4	5	6	7	8	9
10	11	12	13	14	15	16
17	18	19	20	21	22	23
24	25	26	27	28	29	30



"Backyard Bunny" by Judith Jolly, Dade City

Sunday

Monday

Tuesday

Wednesday

Thursday

Friday

Saturday

CHARITY FESTIVAL OF Arts
BENEFITING GULFSIDE HOSPICE

Saturday, April 23
Land O' Lakes Heritage Park
CharityFestivalOfArts.org

						April Fool's Day 1	Beginning of Ramadan 2
3	4	5	6	7	8		9
Palm Sunday 10	11	12	13	14	Good Friday Passover Tax Day 15		16
Easter 17	18	19	20	21	Earth Day 22		
24	25	26	Administrative Professionals Day 27	28	29		30

MAR

S	M	T	W	T	F	S
		1	2	3	4	5
6	7	8	9	10	11	12
13	14	15	16	17	18	19
20	21	22	23	24	25	26
27	28	29	30	31		



Gulfside Healthcare Services

Hospice | Palliative Care | Home Health

MAY

S	M	T	W	T	F	S
1	2	3	4	5	6	7
8	9	10	11	12	13	14
15	16	17	18	19	20	21
22	23	24	25	26	27	28
29	30	31				



"Footprints" by Vincent Hopper, New Port Richey

May 2022

Sunday	Monday	Tuesday	Wednesday	Thursday	Friday	Saturday
1	2	3	4	Cinco De Mayo 5	National Nurses Day 6	7
Mother's Day 8	9	10	11	12	13	14
15	16	17	18	19	20	Armed Forces Day 21
22	23	24	25	26	27	28
29	Memorial Day 30	31				

APR

S	M	T	W	T	F	S
					1	2
3	4	5	6	7	8	9
10	11	12	13	14	15	16
17	18	19	20	21	22	23
24	25	26	27	28	29	30



Gulfside Healthcare Services

Hospice | Palliative Care | Home Health

JUNE

S	M	T	W	T	F	S
			1	2	3	4
5	6	7	8	9	10	11
12	13	14	15	16	17	18
19	20	21	22	23	24	25
26	27	28	29	30		



"Sunset Fisherman" by Pat Manfredo, Hudson

June 2022

Sunday	Monday	Tuesday	Wednesday	Thursday	Friday	Saturday
			1	2	3	4
5	6	7	8	9	10	11
12	13	Flag Day	14	15	16	17
Father's Day Juneteenth	19	20	21	22	23	24
25	26	27	28	29	30	

MAY

S	M	T	W	T	F	S
1	2	3	4	5	6	7
8	9	10	11	12	13	14
15	16	17	18	19	20	21
22	23	24	25	26	27	28
29	30	31				



Gulfside Healthcare Services

Hospice | Palliative Care | Home Health

JULY

S	M	T	W	T	F	S
					1	2
3	4	5	6	7	8	9
10	11	12	13	14	15	16
17	18	19	20	21	22	23
24/31	25	26	27	28	29	30



"Sam's Beach Bar with Umbrella Reflection" by Aimee Maher, Hudson

July 2022

Sunday	Monday	Tuesday	Wednesday	Thursday	Friday	Saturday
					1	2
3	Independence Day 4	5	6	7	8	9
10	11	12	13	14	15	16
17	18	19	20	21	22	23
Parents' Day 24						
31	25	26	27	28	29	30

JUNE

S	M	T	W	T	F	S
			1	2	3	4
5	6	7	8	9	10	11
12	13	14	15	16	17	18
19	20	21	22	23	24	25
26	27	28	29	30		



Gulfside Healthcare Services

Hospice | Palliative Care | Home Health

AUG

S	M	T	W	T	F	S
	1	2	3	4	5	6
7	8	9	10	11	12	13
14	15	16	17	18	19	20
21	22	23	24	25	26	27
28	29	30	31			



"Arbors Trail" by Patrick Storer, Land O' Lakes

August 2022

Sunday	Monday	Tuesday	Wednesday	Thursday	Friday	Saturday
	1	2	3	4	5	6
7	8	9	10	11	12	13
14	15	16	17	18	19	20
Senior Citizens Day 21	22	23	24	25	26	27
28	29	30	31			

JULY

S	M	T	W	T	F	S
					1	2
3	4	5	6	7	8	9
10	11	12	13	14	15	16
17	18	19	20	21	22	23
24/31	25	26	27	28	29	30



Gulfside Healthcare Services

Hospice | Palliative Care | Home Health

SEPT

S	M	T	W	T	F	S
				1	2	3
4	5	6	7	8	9	10
11	12	13	14	15	16	17
18	19	20	21	22	23	24
25	26	27	28	29	30	



"Feeling Lazy" by Doreen Damm, New Port Richey

September 2022

Sunday	Monday	Tuesday	Wednesday	Thursday	Friday	Saturday
				1	2	3
4	Labor Day 5	6	7	8	9	10
Grandparents Day Patriot Day 11	12	13	14	15	16	17
18	19	20	21	22	23	24
25	Rosh Hashanah 26	27	28	29	30	

AUG

S	M	T	W	T	F	S
	1	2	3	4	5	6
7	8	9	10	11	12	13
14	15	16	17	18	19	20
21	22	23	24	25	26	27
28	29	30	31			



Gulfside Healthcare Services

Hospice | Palliative Care | Home Health

OCT

S	M	T	W	T	F	S
						1
2	3	4	5	6	7	8
9	10	11	12	13	14	15
16	17	18	19	20	21	22
23/30	24/31	25	26	27	28	29



"The Lord's Sunset" by Isaac Jeter, Dade City

October 2022

Sunday

Monday

Tuesday

Wednesday

Thursday

Friday

Saturday

Paulie Palooza

Live Music, Vendors, Food Trucks & More

www.PauliePalooza.org



							1
2	3	4	Yom Kippur	5	6	7	8
9	Columbus Day Indigenous Peoples Day	10	11	12	13	14	15
Boss's Day	16	17	18	19	20	21	22
23	24						
30	Halloween	31	25	26	27	28	29

SEPT

S	M	T	W	T	F	S
				1	2	3
4	5	6	7	8	9	10
11	12	13	14	15	16	17
18	19	20	21	22	23	24
25	26	27	28	29	30	



Gulfside Healthcare Services

Hospice | Palliative Care | Home Health

NOV

S	M	T	W	T	F	S
		1	2	3	4	5
6	7	8	9	10	11	12
13	14	15	16	17	18	19
20	21	22	23	24	25	26
27	28	29	30			



"Making Thanksgiving Plans" by Gail S. Diederich, Starkey Park

November 2022

Sunday	Monday	Tuesday	Wednesday	Thursday	Friday	Saturday
		1	2	3	4	5
Daylight Savings Ends 6	7	8	9	10	Veteran's Day 11	12
13	14	15	16	17	18	19
20	21	22	23	Thanksgiving Day 24	25	26
27	28	29	30	<p>November is National Hospice & Home Care Month!</p> <p>Every year, November is recognized as this to help raise awareness of the efforts of local hospice and palliative health care organizations, like Gulfside. More than 800 patients receive care from Gulfside every single day across all three services. For more information about the care provided by Gulfside, visit Gulfside.org or call 727-845-5707 to speak to our team.</p>		

OCT

S	M	T	W	T	F	S
						1
2	3	4	5	6	7	8
9	10	11	12	13	14	15
16	17	18	19	20	21	22
23/30	24/31	25	26	27	28	29



Gulfside Healthcare Services

Hospice | Palliative Care | Home Health


DEC

S	M	T	W	T	F	S
				1	2	3
4	5	6	7	8	9	10
11	12	13	14	15	16	17
18	19	20	21	22	23	24
25	26	27	28	29	30	31



"Reflections" by Donald L. Kuhnle, Hudson Beach

December 2022

Sunday	Monday	Tuesday	Wednesday	Thursday	Friday	Saturday	
 <p>The Candace Glewen Charity Fashion Show Seated Lunch, Vendor Expo, Fashion Show & More www.GulfsideFashionShow.org</p> 					1	2	3
4	5	6	Pearl Harbor Remembrance Day 7	8	9	10	
11	12	13	14	15	16	17	
Hannukah 18	19	20	21	22	23	Christmas Eve 24	
Christmas Day 25	Kwanzaa 26	27	28	29	30	New Year's Eve 31	

NOV

S	M	T	W	T	F	S
		1	2	3	4	5
6	7	8	9	10	11	12
13	14	15	16	17	18	19
20	21	22	23	24	25	26
27	28	29	30			



Gulfside Healthcare Services

Hospice | Palliative Care | Home Health

JAN 23

S	M	T	W	T	F	S
1	2	3	4	5	6	7
8	9	10	11	12	13	14
15	16	17	18	19	20	21
22	23	24	25	26	27	28
29	30	31				

Frequently Asked Questions

Where do I receive care from Gulfside Hospice?

Gulfside Hospice's interdisciplinary team will come to you, wherever you call home in Pasco County. Gulfside provides care wherever works best for the patient. While most people prefer staying in their homes, hospice care is also provided in hospitals, nursing homes, assisted living facilities, and our Gulfside Centers for Hospice Care located throughout Pasco County.

Who provides hospice care?

The hospice care team includes board-certified hospice and palliative care physicians, registered nurses, licensed social workers, chaplains, certified nurses aides and volunteers. This complete team provides expertise for medical, emotional and spiritual needs for patients and their families.

How do I know if palliative care is right for me?

Palliative care may be right for you if you are experiencing serious symptoms due to a chronic illness, including but not limited to: cancer, cardiac disease, respiratory disease, kidney failure, Alzheimer's disease, AIDS, amyotrophic lateral sclerosis (ALS), and multiple sclerosis.

Can I receive curative treatment together with non-hospice palliative care?

Absolutely. Your treatment choices are up to you. You can still benefit from getting non-hospice palliative care at the same time as treatment meant to cure you.

Who provides palliative care?

Each patient meets with the team ARNP. Additional services can be provided by nurses and social workers as directed by the patient's customized plan of care.

What does "skilled home health" mean?

Skilled home health services are ordered by a physician. These include physical therapy, occupational therapy or even speech therapy, as well as skilled nursing care. These services are designed to get you back to where you need to be and maintain your independence.

Who can receive services?

Skilled home health services are designed for anyone recovering from a serious injury, a surgery or serious illness, or those needing medication or disease management. Our hands-on approach allows you to strengthen and recover so that you can keep moving and live life fully.

Still have questions? Our team of experts is available 24/7 to assist you at 800-561-4883, or visit www.Gulfside.org for more information.

Caregiver Support Services



Gulfside's Caregiver Support Services team is here to support families and patients every step of their journey.

Phone Support

Volunteers and staff are regularly available to speak with caregivers and patients to offer a listening ear and provide information, helpful resources, and assistance.

Individual Consultations

When a caregiver calls in with questions, concerns, or needing support, they will be directed to the Caregiver Support Services. Their aim is to actively listen with curiosity, and ask questions to try to fully understand the situation, and provide support.

Support Groups

Caregiver Support Groups allow caregivers to talk with others who are experiencing the same joys and challenges, and who can not only empathize, but offer valuable insights and suggestions. Caregiver Support Groups are a great place to share, interact, and learn from other caregivers in a safe, supportive environment. The groups are peer support groups that are facilitated by trained counselors, and offered free of charge to Gulfside families and members of the community.

Bereavement Support

The goal of Gulfside's Bereavement Support Services is to offer compassionate bereavement support for individuals and families after the loss of a loved one. Services include Individual and Family Grief Counseling, Bereavement Support Groups, Creative Grieving Workshops, and Annual Memorial Services. Bereavement support is available for Gulfside families and members of the community.

HONORABLE MENTIONS



1. "Great Blue Heron
Sunset Flyby" by
Shelby Earle



2. "Backyard Visitor"
by Irina Ramsey

3. "Shaded Path" by
Irina Ramsey

4. "Dancing Dolphin"
by Pat Manfredo

5. "Bluebird Guards
Babies" by
Cheryl Beaudoin





Gulfside Healthcare Services

Hospice | Palliative Care | Home Health

2022 Calendar

Locations

Corporate Resource Center

2061 Collier Parkway | Land O' Lakes, FL 34639

The Hadley Center - West Clinical Office

6117 Trouble Creek Road | New Port Richey, FL 34653

East Clinical Office

36504 State Road 54 | Zephyrhills, FL 33541

Rucki Center for Hospice Care

5760 Dean Dairy Road | Zephyrhills, FL 33541

Gulfside Center for Hospice Care at Heather Hill Healthcare Center

6630 Kentucky Avenue | New Port Richey, FL 34653

Bereavement & Community Outreach Center

6230 Lafayette Street | New Port Richey, FL 34652

Thrift Shoppes

Dade City Thrift Shoppe

37925 Sky Ridge Circle | Dade City, FL 33525

Hudson Thrift Shoppe

12154 US Highway 19 | Bayonet Point, FL 34667

Lutz Thrift Shoppe

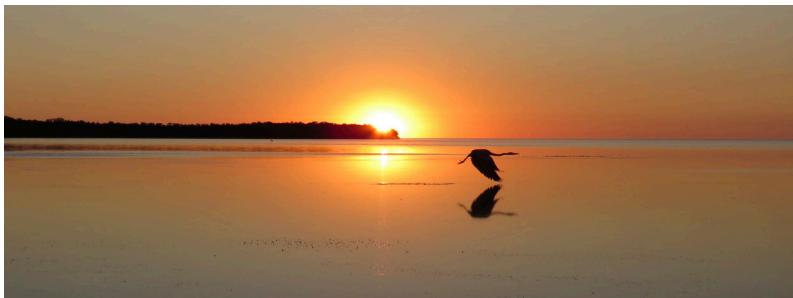
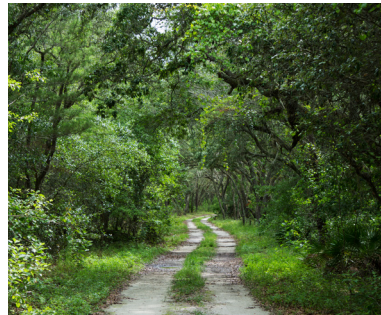
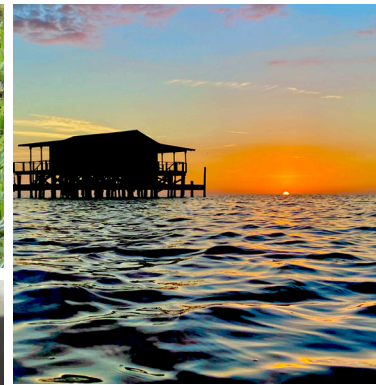
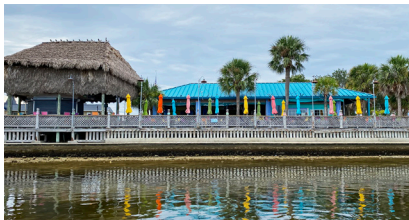
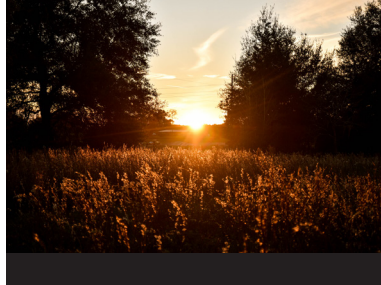
1930 Land O' Lakes Boulevard | Lutz, FL 33549

New Port Richey Thrift Shoppe

6117 State Road 54 | New Port Richey, FL 34652

Zephyrhills Thrift Shoppe

36524 State Road 54 | Zephyrhills, FL 33541



800-561-4883 | www.Gulfside.org

Referral Line: 800-817-9941